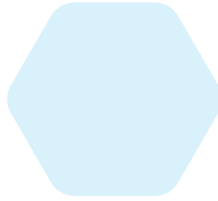




DYNAMIC™
HYDRAULICS



Ver. 1.1 | 2023

Hydraulic Clamping Devices

www.dynamichydraulics.co.in

GO DYNAMIC™

Work support

Product code: DW



Work support

Product code: DW



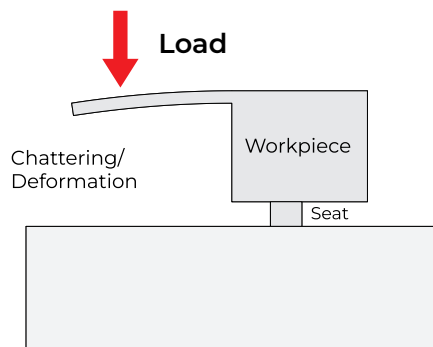
Information:

Work support provides solid adjustable support to parts and Work support will work in most applications where part distortion, deformation, and chatter conditions occur. They can eliminate or reduces most of the problems caused by part movement during machining. Available in two variants Threaded body and Flange body Work support.

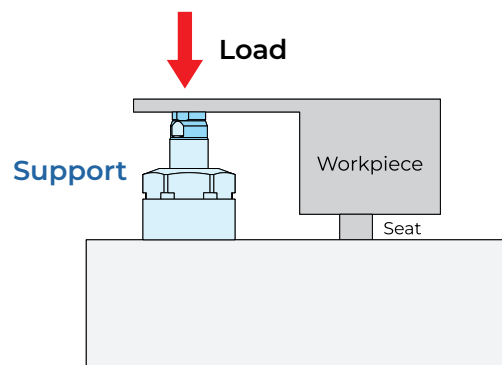
- Work support capacity should be equal to or greater than 1.5 times clamping force plus machining force
- Wiper seals reduce contamination of dust for the long run of Work support
- Special coating on the cylinder body helps to prevent rusting and scratching

Specifications:

- Minimum operating pressure: 25 Bar
- Maximum operating pressure: 70 Bar
- Operating temperature: 10 - 70 °C

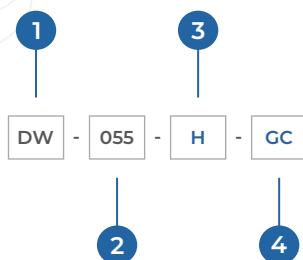


Without Work support



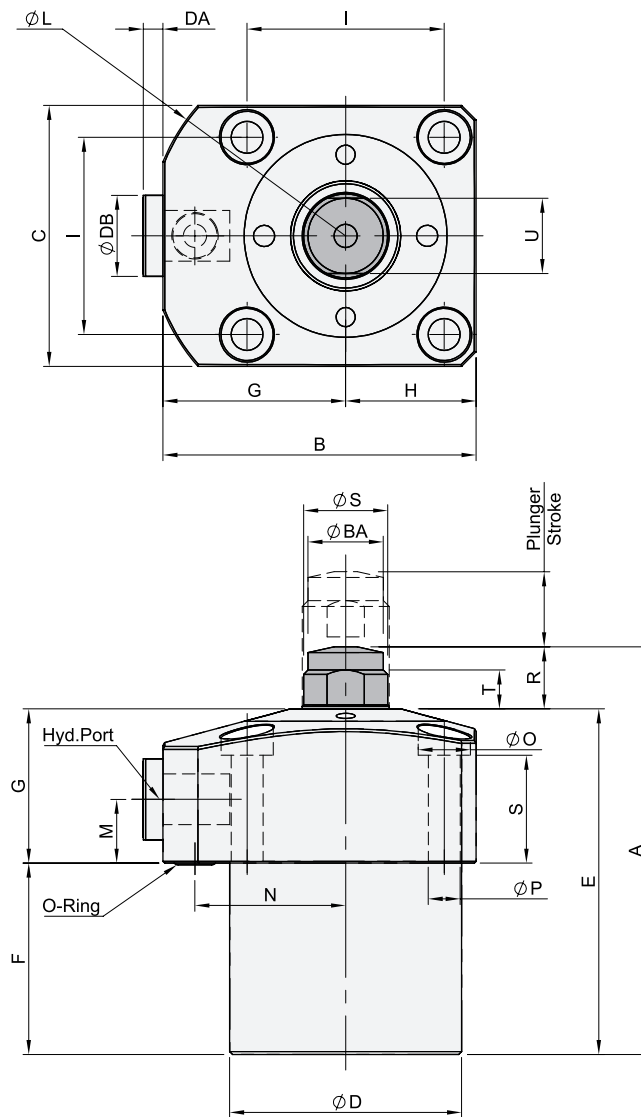
With Work support

Ordering method:

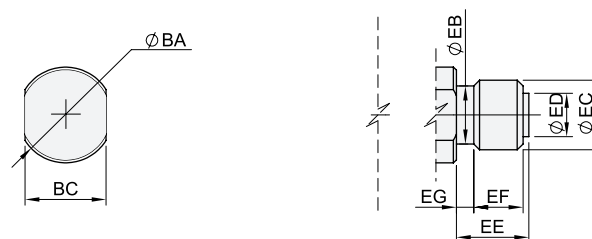


1	Product code	DW
2	Outer diameter	040 048 055 065
3	Rod forward method	S Spring forward H Hydraulic forward
4	Piping method	C Internal piping G External piping GC External piping with internal piping

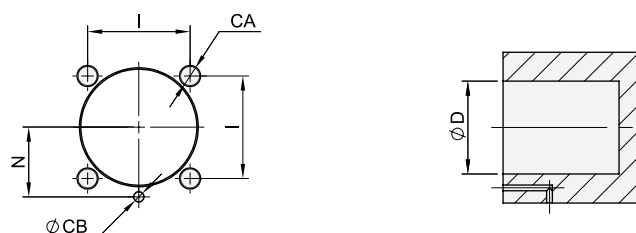
Work support - Flange body



Rest pad dimensions



Mounting details



All dimensions are in mm except otherwise specified.

Work support - Flange body

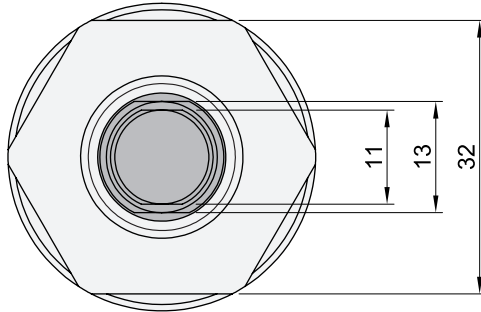
Model No.	DW - 040 -	DW - 048 -	DW - 055 -	DW - 065 -
A	70	78	85	102.5
B	54	63	69	81
C	45	55	60	70
ØD	40	48	55	65
E	59.5	64.5	71	87
F	33	39	44	56
H	22.5	27.5	30	35
I	34	40	47	55
ØL	68	76	80	94
M	11	10	11	11
N	26	30	33.5	40
ØO	9.5	9.5	11	11
ØP	5.5	5.5	6.5	6.5
Q	16	12	15	15
R	11	13.5	14	16
ØS	15	16	20	22
T	7	9.5	8	10
U	13	14	17	19
O-Ring (ID x THK)	Ø 4 x 2	Ø 4 x 2	Ø 4 x 2	Ø 6 x 2
Hyd. Port	G1/8"	G1/8"	G1/8"	G1/8"
ØBA	13	13	16.5	16.5
BC	11	11	14	14
ØEB	8.3	8.3	10	10
EC	M10	M10	M12	M12
ØED	6	6	7.5	7.5
EE	10	10	12.5	12.5
EF	7	7	8.5	8.5
EG	2	2	3	3
CA	M5	M5	M6	M6
ØCB	2	2	2.5	2.5
DA	3.5	3.5	3.5	3.5
ØDB	14	14	14	14
Support force at 7 Mpa. KN	4.5	9.6	14	21
Support force (formula) KN for operating pressure (Mpa)	0.825 x P - 1.25	-	2.36 x P - 2.28	3.83 x P - 5.7
Plunger Stroke MM	8	10	12	14
Cyl. Volume (cm ³)	1.2	2	3.3	4.8
Plunger spring force	L	N	2.8 ~ 4.1	2.8 ~ 4.1
	H	N	4.7 ~ 7.8	9.8 ~ 14.6
			3.8 ~ 5.9	6.2 ~ 11.0
			16.8 ~ 22.0	
Max. operating pressure (Bar)	70			
Min. operating pressure (Bar)	20			
Design Pressure (Bar)	105			
Operating Temp. (°C)	0 - 70			
Weight (Kg.)	0.65	1.16	1.45	2.25

Ordering Method: Product code - DW

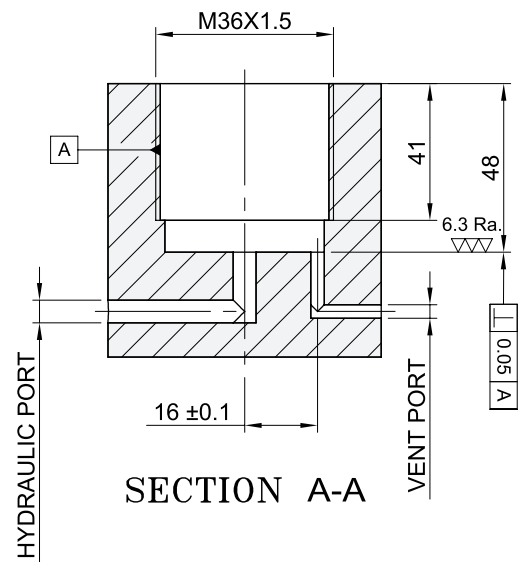
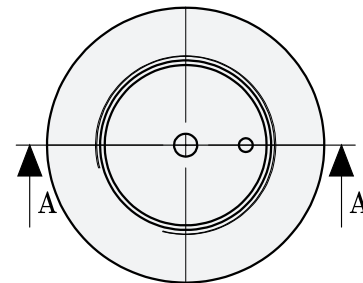
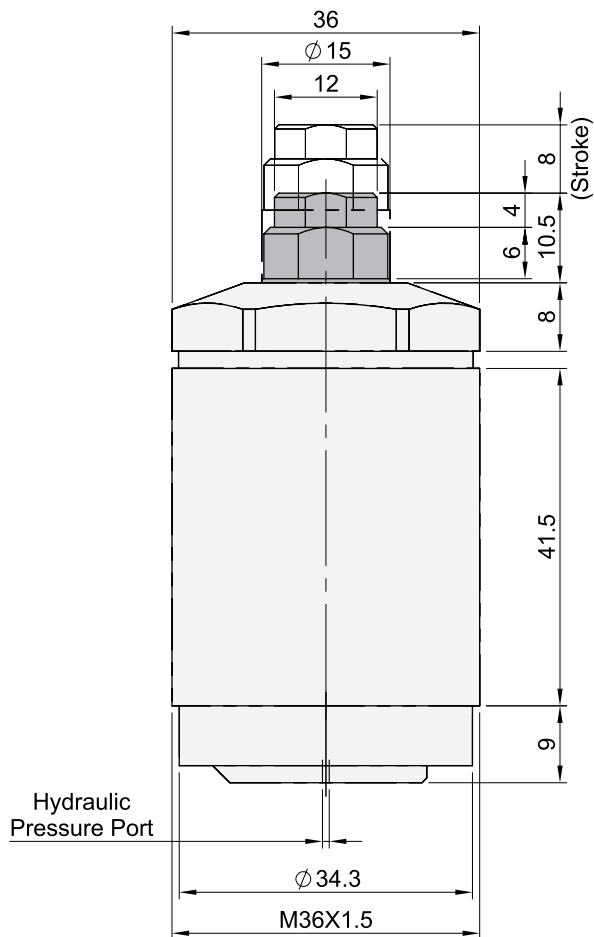
Note: Actual force may vary by 10% - 15% due to friction loss.

Warning: Operating above 70 Bar may damage the Work support and will void the warranty.

Work support - Threaded



Mounting details



Stroke	8 mm
Force	4.7 kN

All dimensions are in mm except otherwise specified.




www.dynamichydraulics.co.in

The dimensions shown in the catalogue can be changed without prior notice to improve product quality.

Since certain products are undergoing research and development, please refer to our website for new updates.

Designed by: Exontrix Systems

 +91 917 283 9607

 527, Shiye Bawada Road, Opposite
MIDC Shirol, Kolhapur - 416122,
Maharashtra, India.

GO DYNAMICTM